

# 169 GDS Helpsheet

*World Leaders in Computer Controlled Testing  
Systems for Geotechnical Engineers and Geologists*

## Software

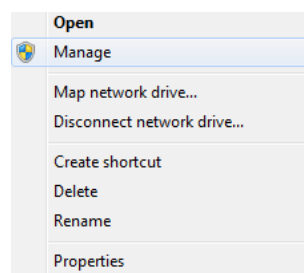
### GDSLab/Windows

#### How to find out the COM port numbers on your PC

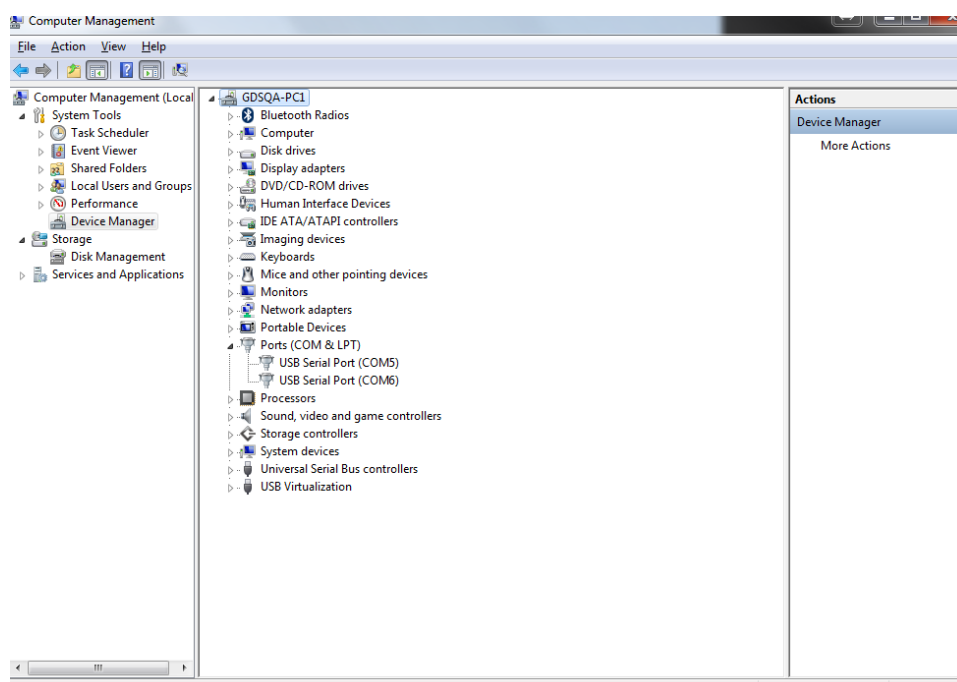
Start by making sure that the PC has either enough COM ports available for all your equipment, or that you have enough converters (such as the dual USB to RS232 converter sold by GDS Instruments) in place to connect all devices to the PC.

Do not connect all devices at once, this can cause confusion and make the process of discovering which device is connect to which com port much more difficult and time consuming.

Right click on 'My Computer' the following box should then appear.



Select 'Manage'



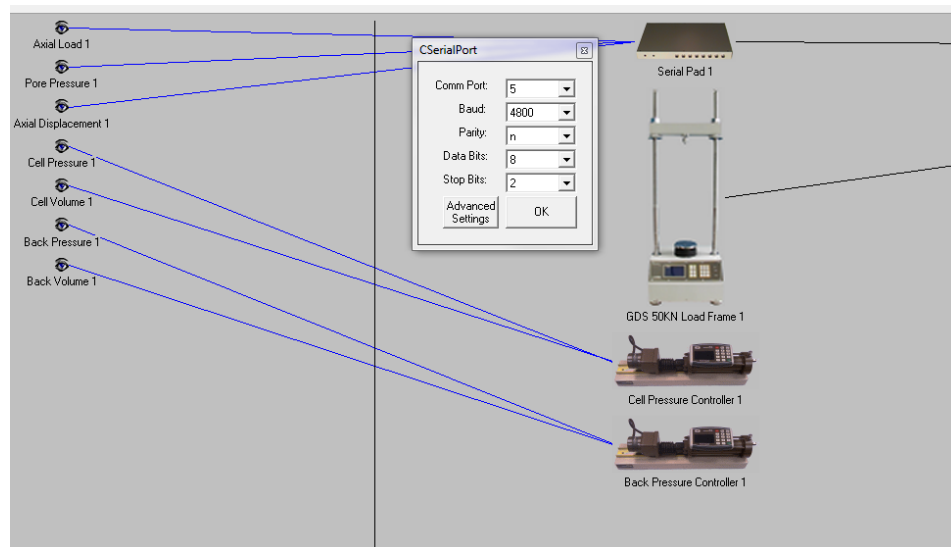
You should then have computer manager pop up, on the left hand selection panel there will be an option for device manager (selected in grey in the screen shot above)

The centre section will then show (see screen shot above), select 'Ports (COM & LPT)'

For the helpsheet we have 1 dual USB to RS232 converter connected. This is shown with the 2 COM ports (COM 5 & COM6)

Once you have this information of which COM ports are available to you, you can start the process of connecting the devices to GDSLab

Open GDSLab and open the object display (see GDSLab manual for instructions if you don't know how to do this).



By left clicking on the device (the example of the serial pad in displayed here) you can then select the COM port number, Baud, Parity, Data Bits & Stop Bits.

If you are using a dual USB to RS232 converter you may not select the correct COM port on the first time, if this happens just left click on the device again and change the COM port number to the other one displayed in the device manager.

Once you have successfully connected the device you can then connect the next one and repeat the process.