

167 GDS Helpsheet

*World Leaders in Computer Controlled Testing
Systems for Geotechnical Engineers and Geologists*

Software

GDS diagnostic tool

How to use the GDS diagnostic tool

Either download the GDS diagnostic tool from the following link:

www.gdsinstrumentspp.com/ftpgdsbes/GDS/Software/GDS_SystemDiagnostics_SetupV1.exe

or alternatively it should be located in the GDSLab CD (from 2013 onwards).

What the tool does

The GDS System Diagnostic tool is a way to enable a user to gather all the information required by GDS about their system, it will run on every system on which GDSLab has been installed.

The program has two parts;

- 1) it can acquire information about both your windows operating system (including what operating system is running on the PC, what updates (if any) are required, and what service pack (if any) is installed)
- 2) The GDSLab version on your PC (including all used .ini files, the version that is installed).

After downloading/ opening the GDSLab CD, double click on the .exe file and run the program.

After a small amount of time the installer will start up and the following box will appear.



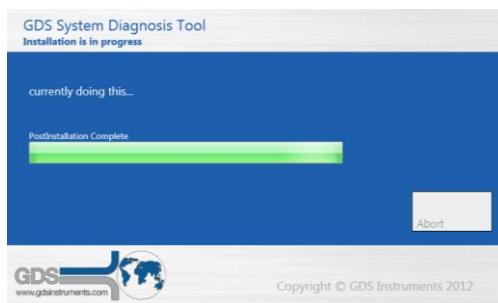
Select 'Continue'



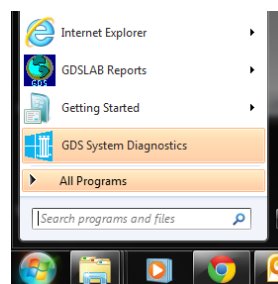
The second pop up box will appear asking where you would like the program to be installed. We recommend that you install it within the GDSLAb folder already installed on your PC, or alternately store it in a location where it can be easily accessed.



The next box allows you to locate the short cut, again the default is to be stored along with GDSLAb, however if you wish to change this select browse and then your preferred location.



The program will then install and the Installation complete box will appear, Select 'Complete' to finish the installation then select 'Exit'



The program can then be found by selecting start and then GDS System Diagnostic, or alternatively in the GDSLAb folder on your C drive (or in the preferred location) and the GDS folder on your start menu.

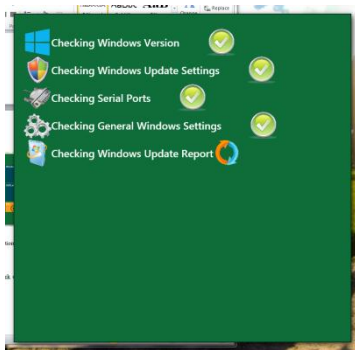
Run the program.



The left pop up window will appear giving three options

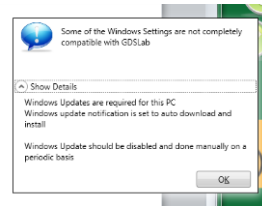
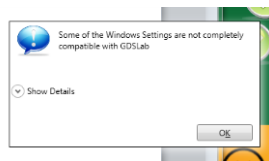
- 1) Windows Health Check
- 2) GDSLab Health Check
- 3) Exit

To run either of the first two options simply click on them to start.



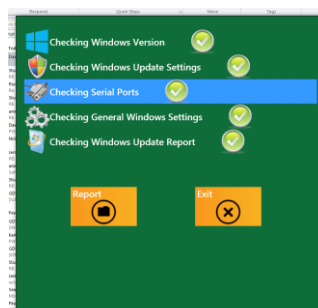
The box (left) will then appear and start checking your system, the marker that appears next to each element refers to the item being check **NOT** that it is OK. For the checking windows selection checking of the windows updates may take some time, this is normal.

Note: For the windows update to be successfully checked the computer must be connected to the internet.

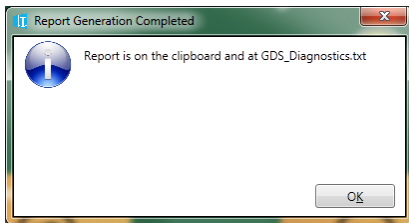


When completed the above box will appear any problem (if any) can be displayed by clicking on the 'show details' arrow.

Note: When using this please check the compatibility issues in the order they are reported to you, you can view all of them by using the drop down menu available when the report has finished checking your system (see box's above) and update and problems that are shown if possible (such as windows updates).



Now click on the 'Report' button, this allows you to save a copy of the report named 'GDS_Diagnostics.txt' in the chosen folder (normally GDSLab unless otherwise specified during the installation) and also saves a copy on clipboard so it can be easily pasted into an email or notepad.



The report will look very similar to that of the screen shot below. It holds all the relevant data described in the introduction of this helpsheet.

```
Untitled - Notepad
File Edit Format View Help
Operating System : test - Microsoft windows 7 Professional
Service Pack - 1
Service Pack Info - 1
edit OS

USB ports are set correctly and will NOT go to sleep
Decimal Divider is [.]
Thousand Divider is [,]
List Divider is [,]
No COM ports found
***** WINDOWS UPDATES ARE REQUIRED FOR THIS PC *****
windows update notification is set to auto download and install
***** windows update Report *****
Microsoft (R) windows Script Host Version 5.8
Copyright (C) Microsoft Corporation. All rights reserved.
Searching for updates...
List of applicable items on the machine:
1> Update for windows 7 for x64-based Systems (KB2574819)
2> Update for windows 7 for x64-based Systems (KB2592687)
3> Definition update for windows defender - KB915597 (Definition 1.143.502.0)
***** End of windows update Report *****
***** Cant find HASP Driver information *****
***** Cant find FTDI Driver information *****
|
```

To then run the GDSLab Health Check click on 'Exit' and this will take you back to the main menu.

Select 'GDSLab Health Check' and follow the same procedure as before.

Note: This file will be a lot larger than the windows file as it will have more information to extract.

After both of the files have been saved using the report button (they will be saved as one file in the chosen folder). Please send the information to GDS support at: support@gdsinstruments.com