

74 GDS Helpsheet

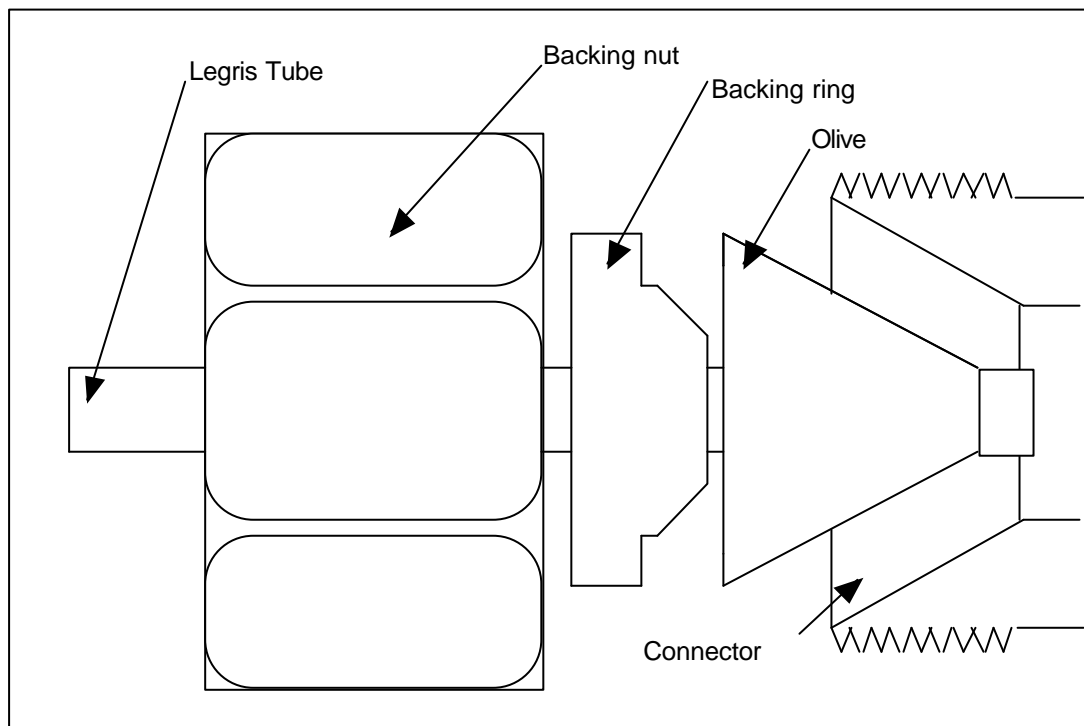
Hardware

Hydraulic Connectors

Fitting Swageloks

1. Introduction

A simple guide to the fitting of swagelok pressure fittings.



1. Ensure the end of the tube is cut straight using the supplied cutter.
2. Place the Backing nut with the screw towards the end to be attached.
3. Place the Backing ring in front of the nut.
4. Place the Olive in front of the Backing ring.
5. Push the tube square into the connection and slide the nut to the connector.

6. For the first operation tighten the nut by hand until "finger tight" and then apply three quarters (270 degrees) of a turn using a spanner.
7. For subsequent use during normal operation tighten the nut by hand and then apply one quarter (90 degrees) turn using a spanner.